

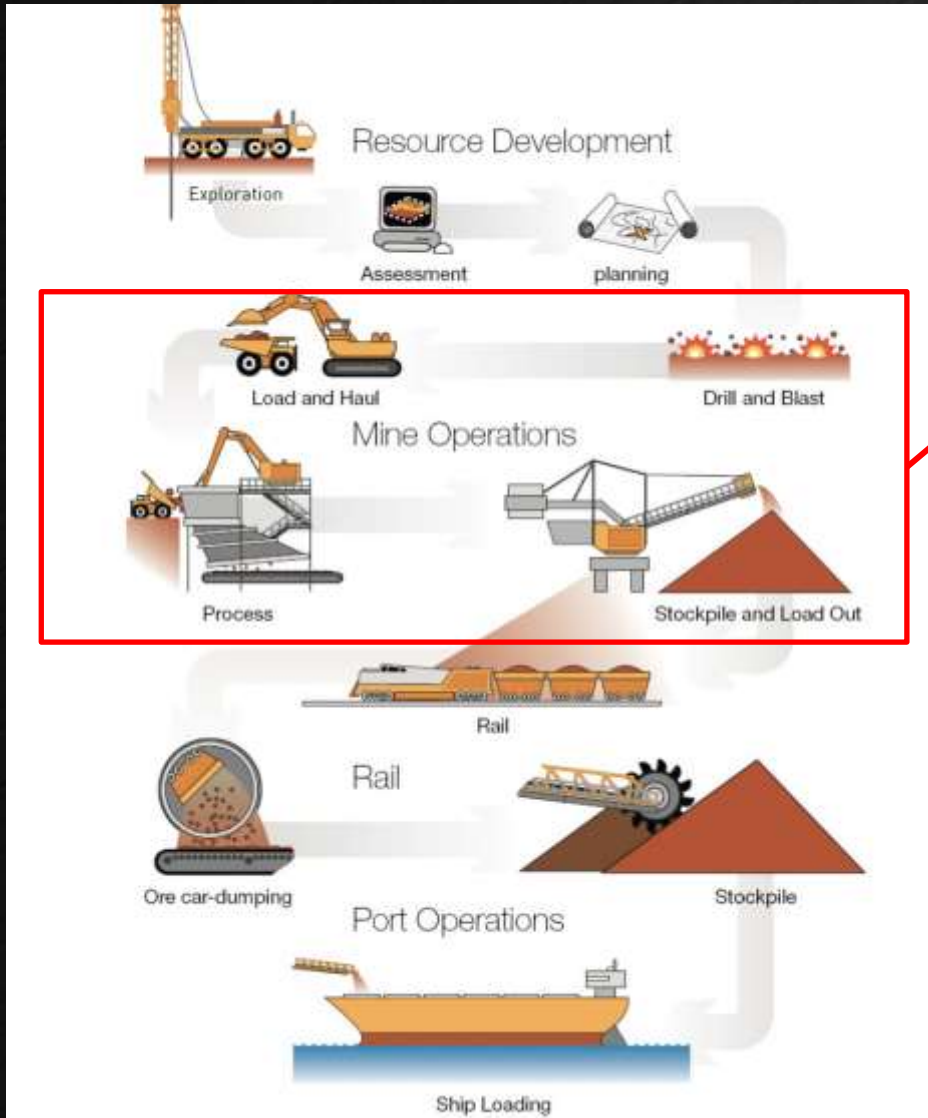
MINING OPERATION GIS IN CHILE

Mining Industry in Chile

- Chile is the largest Copper producer in the world; it represents over 30% of the world's copper production.
- The mining sector contributes about 10% to Chile's GDP directly.
- Mining Foreign Direct Investment (FDI) represents 25% of the total FDI in Chile.
- The mining industry directly and indirectly employs 10% of the country's workforce.



Mining Productive Process



Extraction Phase

Planning



Drilling



Blast



Load



Transportation



A Mining GIS Platform is Needed

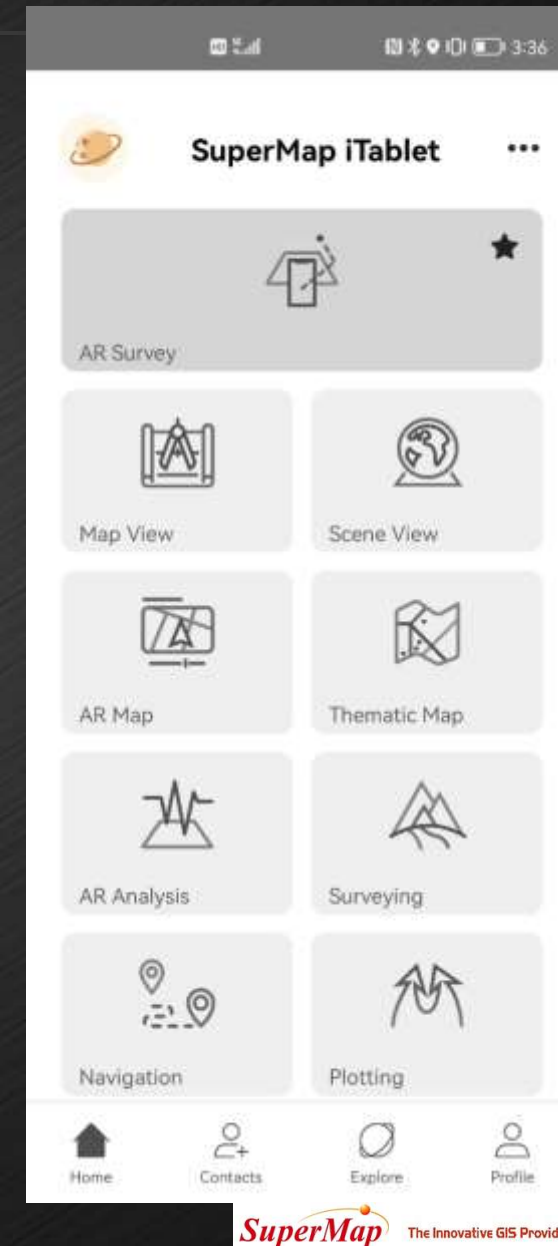
- Make geospatial data available on the ground via a mobile application (providing shift supervisors with a tool to view data in the field).
- Implement a unified 3D visualization platform compatible with others company's softwares.
- The vast amount of data produced in mining operations requires a reliable and robust system capable of processing all the information.



- Short-term planning control
- Adherence to the mine plan
- Design control
- Extractions debts
- Floor elevation
- Drill and blast yard representation

Remote Mining Digital Twin

Geospatial data available on the ground via a mobile application



Remote Sensors to capture de data

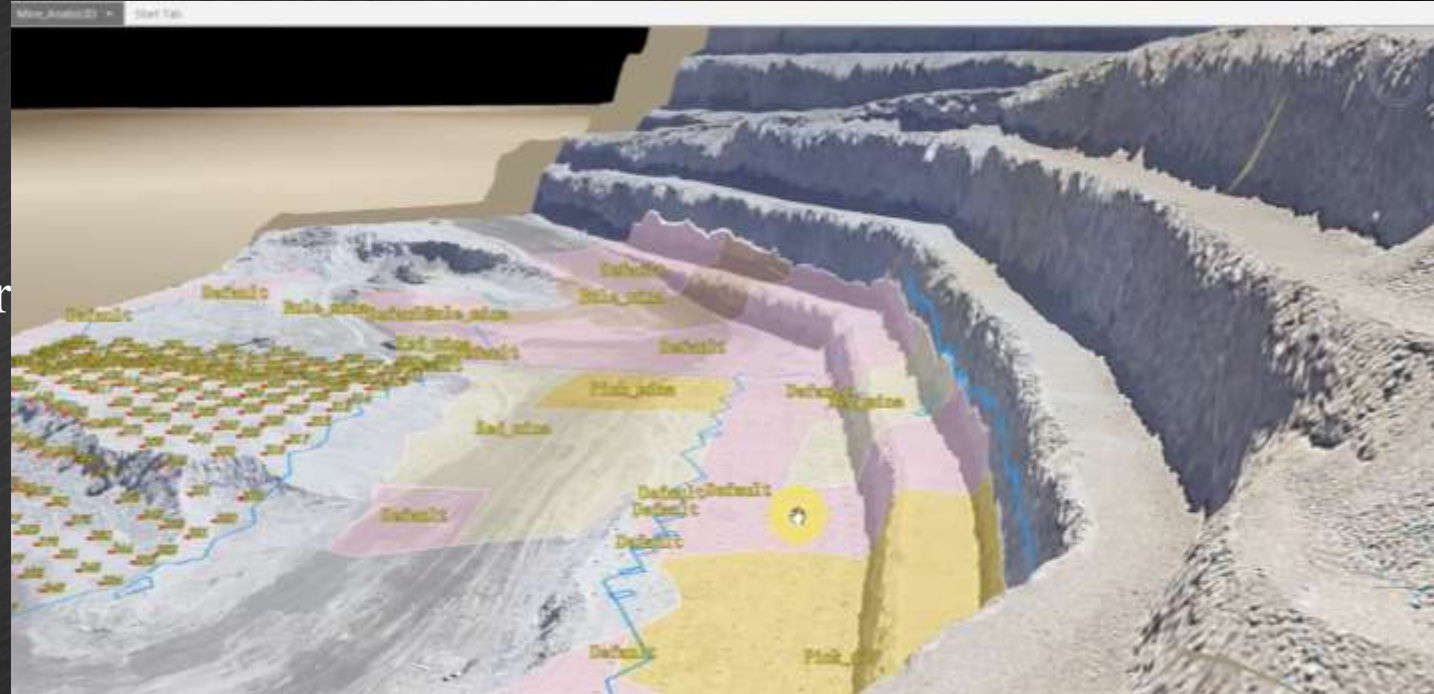


The Icarus system is an innovative long-range field data collection tool designed specifically for the mining industry. Leveraging LiDAR technology, the system is capable of accurately analyze geotechnical movements in real-time.

Groundster is designed to provide comprehensive management, monitoring, and control capabilities for heavy machinery. It supports operators and engineers by offering real-time tools and analytics for decision-making, resulting in optimized operational processes.

What is Coming?

1. Advance Analytics.
2. Integration with other mining software and platforms.
3. Predictive models
4. AI & GI





Thank You All!

GISTC
空间智能 因融至慧

2023地理信息软件技术大会
2023 Geospatial Information Software Technology Conference